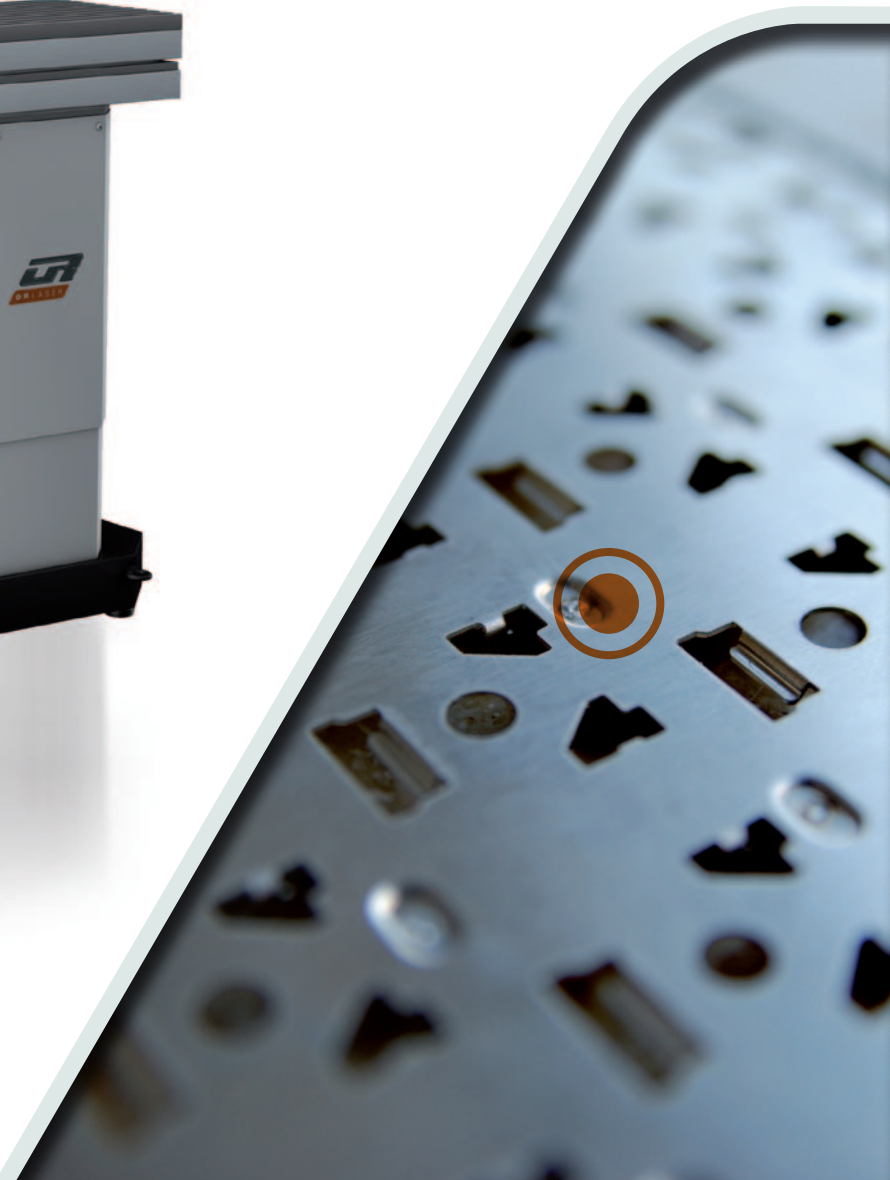


## The perfect entrance

Cost-efficient laser welding system for  
small series and individual parts



# Technical data

## POWER

	TYP: ECO 2600	TYP: ECO 3300	TYP: ECO 4600	TYP: ECO 6400
Lasertype	Nd: YAG	Nd: YAG	Nd: YAG	Nd: YAG
Max. mean power	100 W	120 W	160 W	200 W
Pulse peak power	3,5 kW	6 kW	7,5 kW	9 kW
Max. pulse energy	60 J	70 J	80 J	100 J
Pulse duration	0,4 - 20 ms	0,4 - 20 ms	0,4 - 20 ms	0,4 - 20 ms
Pulse frequency	0,5 - 20 Hz	0,5 - 20 Hz	0,5 - 20 Hz	1 - 20 Hz (100 Hz)
Focus diameter	0,2 - 2,0 mm	0,2 - 2,0 mm	0,2 - 2,0 mm	0,2 - 2,0 mm
Line voltage (V/Ph/Hz)	240 / 1 / 50 - 60	400 / 3 / 50 - 60	400 / 3 / 50 - 60	400/3/50
Line voltage (V/Ph/Hz)	US 110 / 1 / 50 - 60			

## SYSTEM EQUIPMENT

### Laser system

- Laser resonator inclusive resonator mechanics
- Pump chamber
- Laser rod
- Cavity
- Resonator mirror
- Safety shutter
- Beam extension
- Power supply including circuit breaker
- Power disconnecting switch
- Emergency stop switch
- Motor protection switch
- Extra low voltage power supply 24 VDC
- Interface with hardware monitoring function
- Lamp switch
- Industry controller for setting and display of power, pulse duration, pulse frequency with external trigger via foot switch
- Capacitor bank
- Internal water-air cooling system

### Processing optics

- Variable beam expansion
- Beam deflection
- Safety glass
- LCD anti-glare
- Binoculars 10x
- Focussing lens

### Linear system

- 4-axis controller
- Operation via joystick
- Traverse range z-axis: 400 mm (table)
- x-y axis for working table with stepper motor
- Positioning speed 0,5 - 15 mm/s
- Travel: x-axis: 200 mm / y-axis: 120 mm
- LED lightening
- Inert gas supply directly controlled via magnetic valve

### Dimensions and weight

Dimensions: width 472 mm x height 1270 mm x length 1160 mm  
 Weight: 190 kg net