

高硬度鋼專用刀

Carbide End Mill for up to HRc65

品項 ITEM	外觀 APPEARANCE	刃數 FLUTES	螺旋角 HELIX	TYPE	MILL DIA. 刃徑		頁次 PAGE
					MIN	MAX	
BEMS2/2刃微小徑平刀		2	35	Square/Miniature	0.2	0.9	18
BEM2/2刃平刀		2	35	Square	1	12	19
BEM4/4刃平刀		4	35	Square	1	12	20
BELN2/2刃長頸平刀		2	35	Square/Long Neck	0.5	4	21
BEH/45度多刃平刀		6-8	45	Square/Mutil Flutes	6	25	22
BBMS2/2刃微小徑球刀		2	30	Ball/Miniature	0.1R	0.45R	22
BBM2/2刃球刀		2	30	Ball Nose	0.5R	6R	23
BBM4/4刃球刀		4	30	Ball Nose	1R	6R	24
BBML2/2刃長柄球刀		2	30	Ball/Long Shank	1R	6R	24
BBLN2/2刃長頸球刀		2	30	Ball/Long Neck	0.2R	2R	25
BER2/2刃圓鼻刀		2	35	Radius	1	12	26
BER4/4刃圓鼻刀		4	35	Radius	1	12	27

鎢鋼津波刀

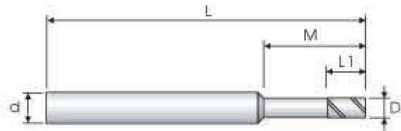
Carbide End Mill - Tsunami

品項 ITEM	外觀 APPEARANCE	刃數 FLUTES	螺旋角 HELIX	TYPE	MILL DIA. 刃徑		頁次 PAGE
					MIN	MAX	
RWS /4刃津波平刀		4	35	Square	2	20	28
RWN /4刃津波圓鼻		4	35	Corner Radius	2	20	29

鎢鋼2刃立銑刀 - 長頸型

CARBIDE END MILLS - Square Type 2 Flutes - Long Neck

BELN2



Mill Dia. [D1]	Tolerance [mm]
Up to 4	+0/-0.02

■ Shank Dia. Tolerance: h6

D1	L1	M	L	d	F	P/N
刃徑 Mill Dia.	刃長 Flute Length	有效長 Length under Shank	全長 Overall Length	柄徑 Shank Dia.	刃數 No. of Flute	品號 Part Number
0.5	0.75	2	50	4	2	BELN2-0502-04A
0.5	0.75	4	50	4	2	BELN2-0504-04A
0.5	0.75	6	50	4	2	BELN2-0506-04A
0.6	0.9	2	50	4	2	BELN2-0602-04A
0.6	0.9	4	50	4	2	BELN2-0604-04A
0.6	0.9	6	50	4	2	BELN2-0606-04A
0.7	1.1	4	50	4	2	BELN2-0704-04A
0.7	1.1	6	50	4	2	BELN2-0706-04A
0.8	1.2	4	50	4	2	BELN2-0804-04A
0.8	1.2	6	50	4	2	BELN2-0806-04A
0.8	1.2	8	50	4	2	BELN2-0808-04A
1	1.5	6	50	4	2	BELN2-1006-04A
1	1.5	8	50	4	2	BELN2-1008-04A
1	1.5	10	50	4	2	BELN2-1010-04A
1	1.5	12	50	4	2	BELN2-1012-04A
1	1.5	16	50	4	2	BELN2-1016-04A
1.5	2.3	6	50	4	2	BELN2-1506-04A
1.5	2.3	8	50	4	2	BELN2-1508-04A
1.5	2.3	10	50	4	2	BELN2-1510-04A
1.5	2.3	12	50	4	2	BELN2-1512-04A
1.5	2.3	16	50	4	2	BELN2-1516-04A
1.5	2.3	20	50	4	2	BELN2-1520-04A
2	3	6	50	4	2	BELN2-2006-04A
2	3	8	50	4	2	BELN2-2008-04A
2	3	10	50	4	2	BELN2-2010-04A
2	3	12	50	4	2	BELN2-2012-04A
2	3	16	50	4	2	BELN2-2016-04A
2	3	20	50	4	2	BELN2-2020-04A
2.5	4	8	50	4	2	BELN2-2508-04A
2.5	4	10	50	4	2	BELN2-2510-04A
2.5	4	12	50	4	2	BELN2-2512-04A
2.5	4	16	50	4	2	BELN2-2516-04A
2.5	4	20	50	4	2	BELN2-2520-04A
3	4.5	8	50	6	2	BELN2-3008-06A
3	4.5	10	50	6	2	BELN2-3010-06A
3	4.5	12	50	6	2	BELN2-3012-06A
3	4.5	16	50	6	2	BELN2-3016-06A
3	4.5	20	50	6	2	BELN2-3020-06A
3	4.5	25	75	6	2	BELN2-3025-06A
4	6	12	50	6	2	BELN2-4012-06A
4	6	16	50	6	2	BELN2-4016-06A
4	6	20	75	6	2	BELN2-4020-06A
4	6	25	75	6	2	BELN2-4025-06A
4	6	30	75	6	2	BELN2-4030-06A
4	6	35	75	6	2	BELN2-4035-06A

單位(unit):mm

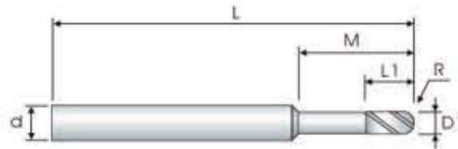
⊙ 優 Excellent ○ 可 Good

碳鋼 Carbon Steels	合金鋼 Alloy Steels	硬化鋼 Hardened Steels	高硬度鋼 High Hardened Steels	銅 Copper	鑄鐵 Cast Iron	鋁 Aluminum	不銹鋼 Stainless Steels	鈦合金 Titanium	鎳鎢合金 Inconel
~HB225	HB225~325	HRC~50	HRC~55						
			⊙						

鎢鋼2刃球型立銑刀 - 長頸型

CARBIDE END MILLS - Ball Nose Type 2 Flutes - Long Neck

BBLN2



Mill Dia. [D1]	Tolerance [mm]
Up to 4	+0/-0.02

■ Shank Dia. Tolerance: h6

R	D1	L1	M	L	d	F	P/N
球頭R Ball Radius	刃徑 Mill Dia.	刃長 Flute Length	有效長 Length under Shank	全長 Overall Length	柄徑 Shank Dia.	刃數 No. of Flute	品號 Part Number
0.2R	0.4	0.3	4	50	4	2	BBLN2-02004-04A
0.25R	0.5	0.4	6	50	4	2	BBLN2-02506-04A
0.3R	0.6	0.5	2	50	4	2	BBLN2-03002-04A
0.3R	0.6	0.5	4	50	4	2	BBLN2-03004-04A
0.3R	0.6	0.5	6	50	4	2	BBLN2-03006-04A
0.4R	0.8	0.6	4	50	4	2	BBLN2-04004-04A
0.4R	0.8	0.4	8	50	4	2	BBLN2-04008-04A
0.5R	1	0.8	4	50	4	2	BBLN2-05004-04A
0.5R	1	0.8	6	50	4	2	BBLN2-05006-04A
0.5R	1	0.8	8	50	4	2	BBLN2-05008-04A
0.5R	1	0.8	10	50	4	2	BBLN2-05010-04A
0.75R	1.5	1.2	8	50	4	2	BBLN2-07508-04A
0.75R	1.5	1.2	16	50	4	2	BBLN2-07516-04A
1R	2	1.6	6	50	4	2	BBLN2-10006-04A
1R	2	1.6	8	50	4	2	BBLN2-10008-04A
1R	2	1.6	12	50	4	2	BBLN2-10012-04A
1R	2	1.6	16	50	4	2	BBLN2-10016-04A
1R	2	1.6	20	60	4	2	BBLN2-10020-04A
1.25R	2.5	2	12	50	4	2	BBLN2-12512-04A
1.25R	2.5	2	20	60	4	2	BBLN2-12520-04A
1.5R	3	2.4	10	60	6	2	BBLN2-15010-06A
1.5R	3	2.4	12	60	6	2	BBLN2-15012-06A
1.5R	3	2.4	16	60	6	2	BBLN2-15016-06A
1.5R	3	2.4	20	75	6	2	BBLN2-15020-06A
2R	4	3.2	16	75	6	2	BBLN2-20016-06A
2R	4	3.2	20	75	6	2	BBLN2-20020-06A
2R	4	3.2	30	75	6	2	BBLN2-20030-06A

單位(unit):mm

◎ 優 Excellent ○ 可 Good

碳鋼 Carbon Steels	合金鋼 Alloy Steels	硬化鋼 Hardened Steels		高硬度鋼 High Hardened Steels	銅 Copper	鑄鐵 Cast Iron	鋁 Aluminum	不銹鋼 Stainless Steels	鈦合金 Titanium	鎳鎳鐵合金 Inconel
~HB225	HB225~325	HRC~50	HRC~55	HRC~65						
			◎	◎						



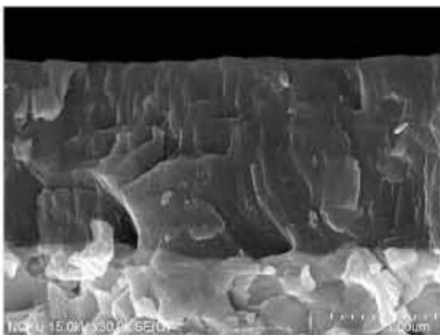
Mill Dia. (D1)	Tolerance (mm)
Up to 0.9	+0/-0.02

Shank Dia. Tolerance: h6

D1	L1	L	d	F	P/N
刃徑 Mill Dia.	刃長 Flute Length	全長 Overall Length	柄徑 Shank Dia.	刃數 No. of Flute	品號 Part Number
0.2	0.4	38	3	2	BEMS202003A
0.25	0.5	38	3	2	BEMS202503A
0.3	0.6	38	3	2	BEMS203003A
0.35	0.7	38	3	2	BEMS203503A
0.4	0.8	38	3	2	BEMS204003A
0.5	1	38	3	2	BEMS205003A
0.6	1.2	38	3	2	BEMS206003A
0.7	1.4	38	3	2	BEMS207003A
0.8	1.6	38	3	2	BEMS208003A
0.9	1.8	38	3	2	BEMS209003A
0.2	0.4	50	4	2	BEMS202004A
0.3	0.6	50	4	2	BEMS203004A
0.4	0.8	50	4	2	BEMS204004A
0.5	1	50	4	2	BEMS205004A
0.6	1.2	50	4	2	BEMS206004A
0.7	1.4	50	4	2	BEMS207004A
0.8	1.6	50	4	2	BEMS208004A
0.9	1.8	50	4	2	BEMS209004A

單位(unit):mm

新一代塗層 New Generation Coating - AlTiCrSiN



- 超高硬度 Extreme High Hardness
- 低摩擦係數 Low Friction Coefficient
- 優良的耐磨性 Excellent Wear Resistance
- 優良的耐熱性 Superior Heat Resistance
- 優良的防震能力 Great Anti-Shock Ability
- 高附著力 High Adhesion

硬度 (Hv) Hardness (Hv)	摩擦係數 Friction Coefficient	最大使用溫度 (°C) Max. Usage Temp. (°C)
4300	0.3	1200

◎ 優 Excellent ○ 可 Good

碳鋼 Carbon Steels	合金鋼 Alloy Steels	硬化鋼 Hardened Steels		高硬度鋼 High Hardened Steels	銅 Copper	鑄鐵 Cast Iron	鋁 Aluminum	不銹鋼 Stainless Steels	鈦合金 Titanium	鎳鎳鐵合金 Inconel
~HB225	HB225~325	HRc~50	HRc~55	HRc~65						
			◎	◎						